



# CHINCHILLA CHRISTIAN COLLEGE

*Let your light shine*



# ANNUAL REPORT 2022

# CHINCHILLA CHRISTIAN COLLEGE OVERVIEW

## College Information

Chinchilla Christian College is a Kindergarten to Year 12, co-educational independent Christian school that provides quality learning experiences for our children and young people within a safe and caring Christian environment. Established in 1983 and located at 88 Oak Street, Chinchilla, the College has grown to have a Kindergarten, Primary School and Secondary School.

Our school's motto is, "Let your light shine." Our vision is to develop confident and compassionate men and women of character who will shine in their work and service, to the glory of God. Our mission is to provide rich, authentic learning opportunities within a Christian environment to equip students to fulfil their potential.

At Chinchilla Christian College, we aim to be a learning community where every student can shine. We are passionate about seeing students thrive – spiritually, academically, physically, emotionally and socially. We seek to educate the whole person. That is, we focus on the head, the hands and the heart.

In this way, we encourage students to have strong minds, develop practical skills and cultivate wholesome, Christian values.

At Chinchilla Christian College, we believe God has a special plan and purpose for every child and that each one can achieve success. Offering Australian Curriculum founded on a distinctively Christian worldview, the College caters for a wide range of student learning needs. Our educational program is enriched with a wide range of co-curricular activities that facilitate the further development of individual student strengths and abilities. We are passionate about equipping each student to 'shine'.

2021				
Male	Female	Total	Indigenous	SWD
229	211	440	44	11

2022				
Male	Female	Total	Indigenous	SWD
220	217	437	40	13





## Curriculum Offerings

At Chinchilla Christian College, we implement the Australian Curriculum, providing opportunities for students to undertake studies in Mathematics, English, Humanities and Social Sciences, Science, Health and Physical Education, The Arts, Technologies and Languages (Secondary).

As students move into Secondary School, more specific subject offerings are part of our educational program, including: Music, Visual Arts, Dance, Drama, Media Arts, Industrial Design and Technology, Digital Technologies, Food and Textiles Technologies as well as Business and Civics.

As students move into Senior Secondary, they embark on university-ready (ATAR eligible) and work-ready (QCE eligible) pathways. We offer students a broad range of General, Applied and Certificate courses to choose from. Students can also undertake school-based apprenticeships and traineeships.

The College also has a strong Enrichment program to help cater for student needs. Our teachers and teacher aides are directed and supported by our Enrichment Coordinator, who all work with students in classrooms, small groups and individually within a mainstream schooling environment. The main focus is on literacy and numeracy development and supporting each student in reaching the benchmark for their respective year level.

### EXTRA-CURRICULAR ACTIVITIES

Our educational program is enriched with a range of extra-curricular activities that facilitate the further development of individual student strengths and abilities. These extra-curricular activities include: House competitions, musicals, after school sport and an instrumental music program.

The College is involved in inter-school and district sporting activities, which provides students the opportunity to achieve success and progress in various sports.

Students from Years 2 - 12 also enjoy a wide range of camps. These camps include on-site and off-site facilitation of activities. In Year 2 an introductory on-site camp allows students to develop the initial skills required to interact with other students in an outside of normal school hours activity. For off-site camps students travel to other destinations for their camps, which are a special time for social, emotional, leadership and life skills development.



## Social Climate of College

Chinchilla Christian College maintains a social climate that upholds the values of equality, respect and safety. Student welfare and pastoral care are an integral part of our school and its environment.

Our goal is for all our students to have a high level of emotional, social, physical and spiritual wellbeing.

All staff members and students play a key role in the day-to-day pastoral care of the College by working as a community to encourage and support one another in all areas of life.

Our Chaplains, whose aims are to provide social and emotional support for our school community, offer pastoral care at Chinchilla Christian College. The Chaplains focus on prevention and support. This is done by helping students find a better way to deal with issues ranging from family breakdown and loneliness to depression and negative thoughts about self. The Chaplain provides a listening ear and a caring presence for kids in crisis and those who just need a bit of support.

In response to bullying, the College has zero tolerance for this type of behaviour. It seeks to provide an environment where all students feel safe, happy, valued, engaged and purposeful.





# Parent and Teacher Satisfaction

## PARENTAL INVOLVEMENT

We encourage parental involvement at the College, with parents and carers being able to assist in several ways.

Parents are involved in the P&F Group, which usually meet each month to discuss developments within the College, provide feedback on various matters, and raise funds for specific projects.

Parents and carers assist in classrooms, mainly during literacy and numeracy blocks across the Primary School.

Parents also attend Assemblies, help during class excursions, attend Chapel services, support sporting events and work in partnership to achieve the best possible opportunities for our students.

We greatly value the contribution made by our parents and carers.

## PARENT SATISFACTION WITH THE SCHOOL

Ensuring a high level of satisfaction among the school community is of utmost importance for the College. The latest Annual Parent Satisfaction Survey revealed the following levels of satisfaction amongst parents:

### PARENT SATISFACTION

Parents satisfied with the quality of facilities and resources	89.7%
Parents satisfied with the care of students	79.3%



## CONTACT PERSON

All College enquiries to be made to the Assistant to the Principal, Tina Gerke.

Phone: (07) 4668 9777

Address: 88 Oak St, Chinchilla QLD 4413

Email: [admin@chinchillacc.qld.edu.au](mailto:admin@chinchillacc.qld.edu.au)

## SCHOOL INCOME BROKEN DOWN BY FUNDING SOURCE

For information relating to school income, please refer to the My School website.

<https://www.myschool.edu.au/school/48086/finances>





## Staffing Information

### STAFF COMPOSITION

The table below shows information in relation to staff working at Chinchilla Christian College in 2022.

Total Staff	65
Full Time	40
Part Time	25
Teaching	34
Non-Teaching	31
Indigenous	0

### QUALIFICATIONS OF TEACHERS

Qualification	Number of Teachers & School Leaders who hold this Qualification
Masters	5
Bachelor	27
Diploma	2



## Key Student Outcomes

The average attendance rate for the whole school as a percentage in 2022 was 91%.

### AVERAGE STUDENT ATTENDANCE RATE FOR EACH YEAR LEVEL

Year Levels	Average attendance rate for each year level as a percentage in 2022
Prep	92%
Year 1	92%
Year 2	92%
Year 3	93%
Year 4	89%
Year 5	94%
Year 6	91%
Year 7	92%
Year 8	91%
Year 9	89%
Year 10	91%
Year 11	93%
Year 12	91%

### NON-ATTENDANCE

Administration staff at the College manage student non-attendance. Parents are required to inform the school if their child is absent for any reason. If the school is not informed, Administration staff phone parents to confirm the absence and reason for it. If there are planned absences for students, parents are required to complete appropriate documentation with the Assistant to the Principal, who will arrange schoolwork with teachers.





## NAPLAN BENCHMARK DATA

All students are encouraged to participate in NAPLAN. We see NAPLAN as an important additional testing tool to enable families and teachers to evaluate student progress. The College has a strong commitment to helping students achieve their potential by providing quality learning experiences within a supportive school environment.

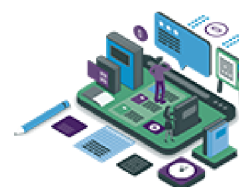
Our most recent NAPLAN results can be found at:

<https://www.myschool.edu.au/school/48086/naplan/results>

OUTCOMES FOR OUR YEAR 12 COHORT 2022	
Number of students awarded a Senior Education Profile	10
Number of students awarded a Queensland Certificate of Individual Achievement (QCIA)	0
Number of students who received an ATAR	4
Number of students who are completing or completed a School-based Apprenticeship or Traineeship (SAT)	5
Number of students awarded one or more Vocational Education and Training (VET) qualifications	10
Number of students awarded a Queensland Certificate of Education at the end of Year 12	10
Number of students awarded an International Baccalaureate Diploma (IBD)	0
Percentage of Year 12 students who received an ATAR above 90	0%
Percentage of Year 12 students who are completing or completed a SAT or were awarded one or more of the following: QCE, IBD, VET qualification	100%
Percentage of Queensland Tertiary Admissions Centre (QTAC) applicants receiving a tertiary offer	100%

## Next Step 2023 Post-School Destinations

### Chinchilla Christian College



This is a summary of the post-school destinations of students from Chinchilla Christian College who completed Year 12 and gained a Senior Statement in 2022. The results are from the *Year 12 Completers Survey*, which is conducted approximately six months after students completed Year 12.



For more information about the survey visit the *Next Step* website [www.qld.gov.au/nextstep](http://www.qld.gov.au/nextstep). Regional and statewide reports will be available from October 2023.



#### 71.4% response rate

5 out of 7 Year 12 completers from this school responded to the 2023 survey.  
*Results may not be representative of all Year 12 completers at this school.*

#### Post-school destinations



In 2023, four Year 12 completers from Chinchilla Christian College were engaged in education, training or employment in the year after they completed school.



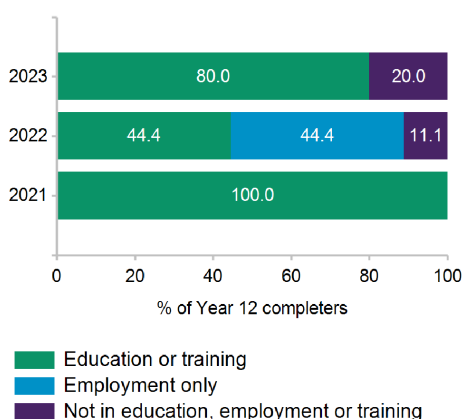
Of the five respondents, four continued in education and training. The most common study destination was VET certificate.



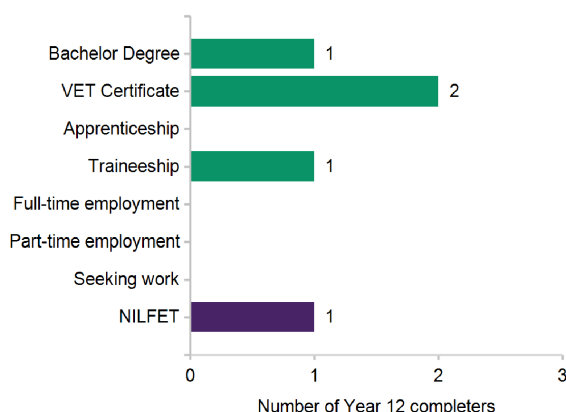
No respondents transitioned directly into paid employment only.

All Year 12 completers were assigned to a *main destination*. Respondents who were both studying and working are reported as being in education or training, including apprentices and trainees.

#### Engagement over time



#### Main Destination in 2023



Queensland  
Government